



# DISTRICT SCALE CRITICAL MINERALS EXPLORATION

## NEWFOUNDLAND, CANADA





# FORWARD LOOKING STATEMENTS & DISCLOSURES

TSXV:CTM1

This presentation was prepared by management of Canterra Minerals Corporation (“Canterra” or the “Company”). The information contained in this presentation (a) is provided as at the date hereof, (b) does not purport to contain all the information that may be necessary or desirable to fully and accurately evaluate an investment in Canterra, and (c) is not to be considered as a recommendation by Canterra that any person make an investment.

Canterra cautions all statements (including any oral commentary that may accompany this presentation), other than statements of historical facts, contained in this presentation and attributes of the Wilding Lake project; the business and operations of the Company, including future results of operations or financial condition, prospects, business strategy and plans and objectives of management for future operations, and other prospective transactions and their terms disclosed herein and the pro forma details of the Company post-closing of all prospective transactions, are forward-looking statements.

The words “believe,” “will,” “may,” “estimate,” “continue,” “projection”, “anticipate,” “intend,” “should,” “plan,” “expect,” “predict,” “could,” “potentially” or other similar expressions are intended to identify forward-looking statements, although not all forward- looking statements contain these identifying words.

Actual results and trends in the future may differ materially from those suggested or implied by the forward-looking statements depending on a variety of factors, including market prices, potential environmental issues or liabilities associated with exploration, development and mining activities, exploration and exploitation successes, continuity of mineralization, uncertainties related to the ability to obtain necessary regulatory approvals, permits, licenses and title and delays due to third party opposition, changes in and the effect government policies regarding mining and natural resource exploration and exploitation, continued availability of capital and financing, ongoing COVID-19 pandemic and general economic, market or business conditions. The forward-looking statements contained in this presentation speak only as of the date the statements are made and are based on information available to the Canterra at the time those statements are made and/or management’s good faith belief as of that time with respect to future events. Such statements are based upon the current beliefs and expectations of Canterra’s management and are subject to significant business, social, economic, political, regulatory, competitive and other risks, uncertainties, contingencies and other factors. Many assumptions are based on factors and events that are not within the control of Canterra. Actual future results may differ materially from historical results or current expectations.

These risks, uncertainties and assumptions could adversely affect the outcome and financial effects of the plans and events described herein. In addition, even if the outcome and financial effects of the plans and events described herein are consistent with the forward-looking information contained in this presentation, those results or developments may not be indicative of results or developments in subsequent periods. Although Canterra has attempted to identify important risks and factors that could cause actual actions, events or results to differ materially from those described in forward-looking information, there may be other factors and risks that cause actions, events or results not to be as anticipated, estimated or intended. Forward-looking information contained in this presentation is based on Canterra’s current estimates, expectations and projections, which Canterra believes are reasonable as of the current date. Canterra can give no assurance that these estimates, expectations and projections will prove to have been correct. You should not place undue reliance on forward-looking information, which is based on the information available as of the date of this presentation. Forward-looking information contained in this presentation is as of the date of this presentation and, except as required by applicable law, the Company assumes no obligation to update or revise them to reflect new events or circumstances. Historical statements should not be taken as a representation that such trends will be replicated in the future. No statement in this presentation is intended to be nor may be construed as a profit forecast. Additional information related to Canterra, including risks and uncertainties, can be found on its SEDAR profile at [www.sedar.com](http://www.sedar.com).

The technical information contained in this corporate presentation has been reviewed and approved by Christopher Pennimpede, P.Geo. and President & CEO of Canterra Minerals Corporation. Mr. Pennimpede is a “Qualified Person” as defined by National Instrument 43-101, Standards of Disclosure for Mineral Projects.



# Phase One Buchans Drill Results To Date

- **STRATEGIC ASSETS** – Second-largest critical minerals resource in Newfoundland. District scale land position in Newfoundland's prolific central Mining District- Currently 4,000 meters into a 10,000 meter drill program
- **May 20,2025**
  - **6.77% copper equivalent over 5.35 m** (1.05% Cu, 7.17% Zn, 4.63% Pb, **140.0 g/t Ag & 0.88 g/t Au**) from 145 m below surface
    - **and 1.07% CuEq over 18.00m**
- **June 3,2025**
  - **68.0m of 1.0% CuEq** (0.50% Cu, 1.00 % Zn, 0.43% Pb, 3.5 g/t Ag & 0.06 g/t Au), **from surface**
    - **including 11.0m of 2.14% CuEq**
- **June 23,2025**
  - **60.7m of 0.85% CuEq** (0.39% Cu, 1.00 % Zn, 0.55% Pb, 2.5 g/t Ag & 0.03 g/t Au) from just 15.3 m to 76 m below surface
    - **including 4.7 metres of 2.29% CuEq** (1.19% Cu, 2.25% Zn, 1.27% Pb, 9.3 g/t Ag & 0.06 g/t Au)
- **July 9,2025**
  - **4.07% copper equivalent ("CuEq") over 4.20 m** (0.75% Cu, 5.98% Zn, 3.01% Pb, **60.23 g/t Ag & 0.96 g/t Au**) from 297 m below surface (hole H-25-3536)
    - **including 12.04% CuEq over 1.20 m** (2.32% Cu, 17.72% Zn, 9.05% Pb, 150.50 g/t Ag & 3.11 g/t Au)

# INVESTMENT HIGHLIGHTS

## ✓ FOUNDATION OF A DEVELOPER

**Second-largest critical minerals resource in Newfoundland.** District scale land position in Newfoundland's prolific central Mining District directly adjoining Calibre Mining's new Valentine mine

## ✓ UPSIDE OF CONSOLIDATION

7 Resource stage Critical Mineral Deposits in a Tier 1 Jurisdiction with excellent infrastructure. Consolidation of all known deposits for the first time

## ✓ SUPPORT

Major shareholders : Eric Sprott (4%), Michael Gentile (4%)

## ✓ CATALYSTS

AI and Machine Learning driven exploration utilizing 100 years of mine and regional datasets on the Buchans project.

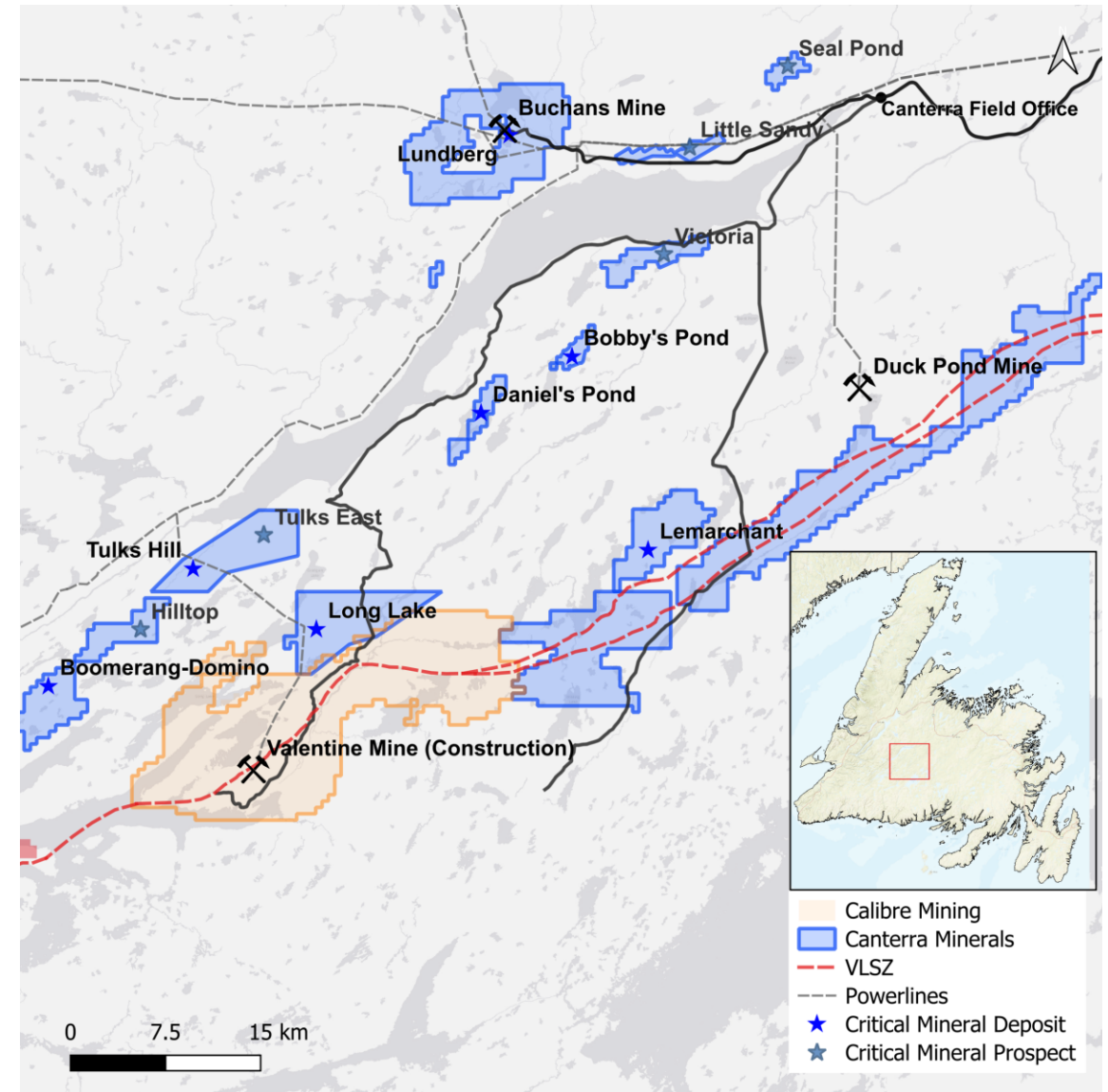
2,000m maiden drill program on the former Tier 1 (Cu-Zn) Buchans mine focused on high-grade discoveries within the brownfields

Past drill highlights from Buchans include:

- 47m @ 1.6%Cu, 10.5%Pb, 20.9%Zn, 110g/t Ag, 1.6g/t Au (historic)
- 117m @ 0.3%Cu, 2.06%Pb, 5.0g/t Ag, 0.03 g/t Au

## ✓ GOALS

- Through systematic exploration build on the early discoveries targeting a new high grade Buchans Style VMS deposit.





# LOCATION & INFRASTRUCTURE

## ✓ **Road Accessible Year Round**

Copper projects tied to power grid gold projects 50 km from Millertown, 30km from former Duck Pond mine and powerlines, extensive network of well-maintained logging roads and adjoins Equinox's Mine road

## ✓ **Regional Infrastructure Support**

Equinox Gold and NL Hydro advancing power, road access and infrastructure. Regional highway upgrades by province planned.

## ✓ **Tier 1 Jurisdiction**

Safe, stable, rule-of-law jurisdiction mining history and established permitting processes with recent permitting success of Equinox's Valentine mine from discovery of resources to construction and first pour in Q3 2025

## ✓ **Experienced Local Work Force and Community Support**

Home to a large workforce of local resource industry professionals with multi generational mining heritage





# MANAGEMENT AND BOARD OF DIRECTORS



**Chris Pennimpede, P.Geo**  
**CEO and Director**

- 17 years of exploration experience
- Underworld/Kinross
- Operations Manager CSA Global
- Smash Minerals/Prosperity Goldfields/Northern Empire



**Paul Moore, P.Geo, M.Sc**  
**VP Exploration**

- More than 30 years of exploration experience focused in Eastern Canada
- Former Senior Geologist at Teck Corporation and Anglo American
- Board Member, Mining NL



**Joanne Kearney, B.Sc,**  
**Director**

- 20 years experience advising Canada's mining and capital markets industries, with a focus on transactional communications, corporate affairs and crisis management



**Andrew Farncomb, B. Comm**  
**Director and Chairman**

- Founder and Managing Partner of Cairn Merchant Partners LP
- Former Partner at Paradigm Capital Inc.
- Director at Northern Superior Resources



**Nicklas Coleman, B.Comm**  
**Director**

- Founder and Co-Owner of Coleman Brothers Investments
- Former VP, Director and Investment Counsellor – BMO Private Banking
- Honors Bachelor of Commerce, Smith School of Business at Queens University



**Josh Serfass**  
**Director**

- Strategic Advisor at VRIFY
- Former Executive Vice President of Corporate Development at Integra Resources Corp. and Former Manager of Corporate Communications Integra Gold; sold to Eldorado Gold for \$600M in 2017



**Michael Power, P.Eng, CFA**  
**Director**

- 50 years of experience in the mining industry
- Director at Greencastle Resources Ltd
- Former VP at Hemlo and Noranda



**David J. Butler, P.Geo**  
**Exploration Manager**

- More than 30 years of exploration experience, primarily in Newfoundland-based VMS assets
- Board Member, Professional Engineers and Geoscientists of Newfoundland and Labrador



**Konrad Chrzastowski, P.Geo, M.Sc**  
**Corporate Development**

- Exploration experience across multiple deposit types from Diamonds to Porphyry Copper across Canada and the USA
- Masters focused on platinum/palladium ore deposits – Stillwater complex, Montana



# CAPITAL STRUCTURE <sup>1</sup>

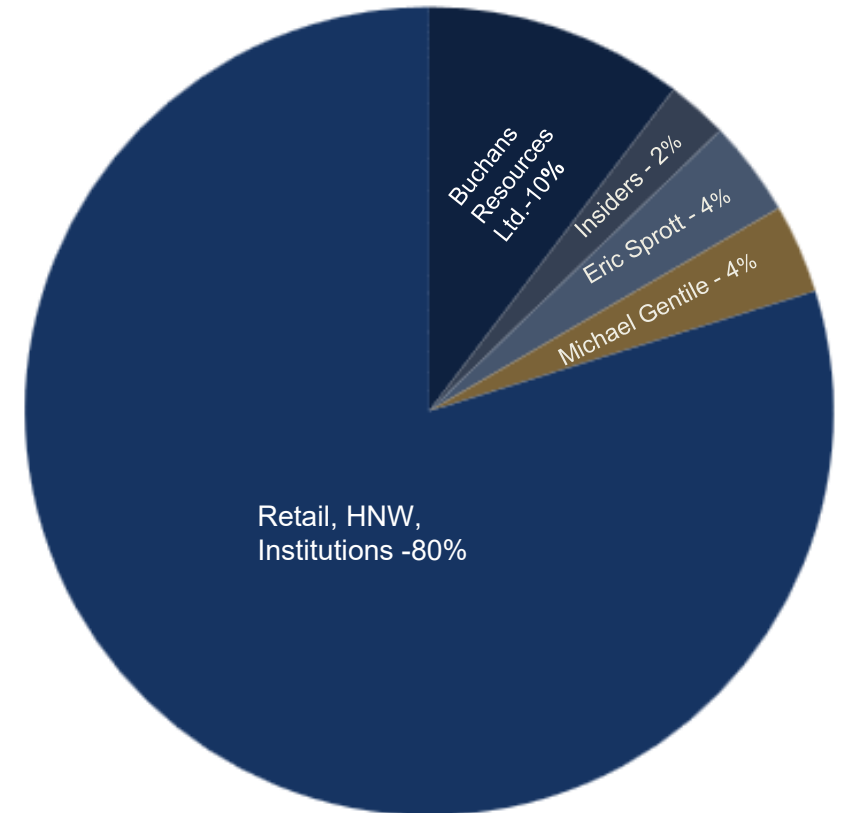
## Basic Shares Outstanding

Canterra Shares Outstanding	M	343.3
<b>Shares Outstanding</b>	<b>M</b>	<b>343.3</b>

## Fully Diluted Shares Outstanding

Options - Expiry	Strike	# mm
2026-03-19	\$0.34	1.9
2026-10-18	\$0.31	2.1
2028-05-11	\$0.07	3.0
2028-06-07	\$0.07	0.3
<b>Total Options</b>	<b>\$0.21</b>	<b>7.2</b>
Warrants - Expiry		
2026-06-27	\$0.15	2.5
2026-06-27	\$0.09	10.3
2028-04-24	\$0.08	20.8
2025-12-21	\$0.07	1.3
<b>Total Warrants</b>	<b>\$0.07</b>	<b>34.8</b>
<b>Fully Diluted Shares Outstanding</b>	<b>M</b>	<b>385.4</b>

## Basic Share Ownership

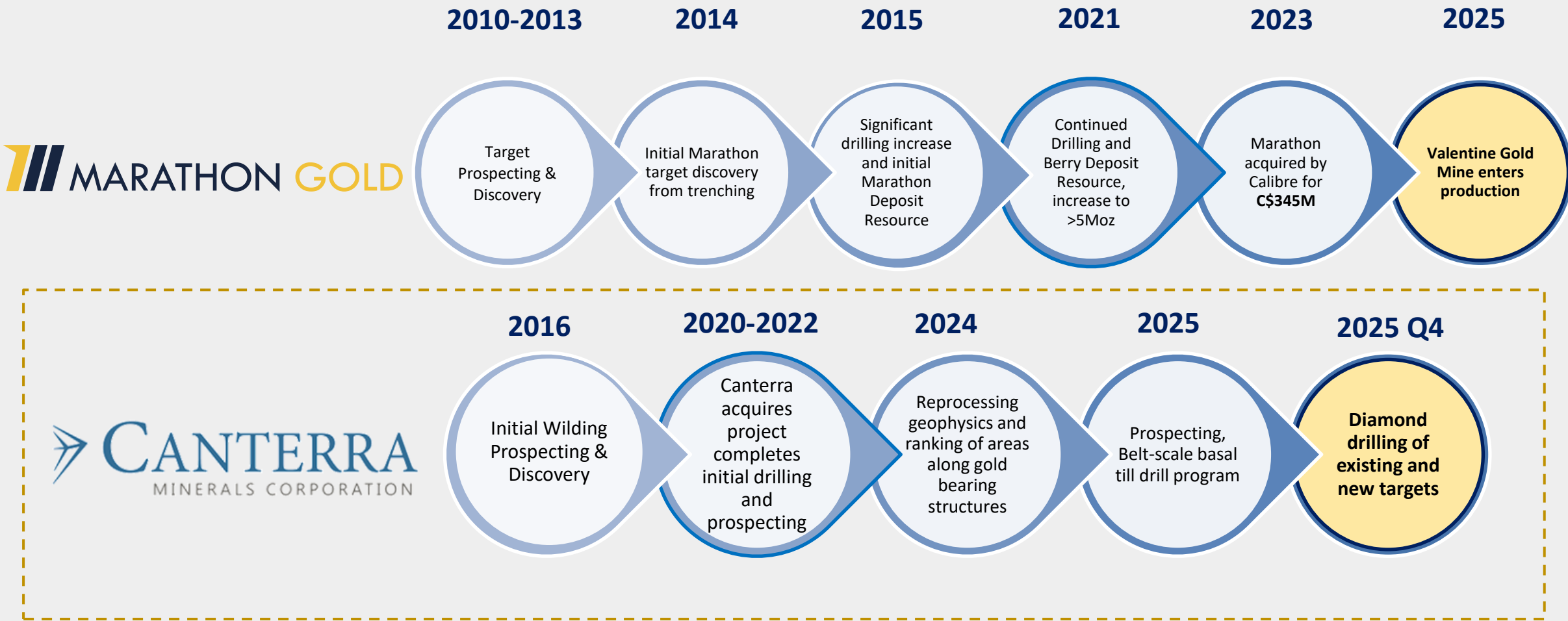


## • Past Financings

- Dec2024 \$4.6M @0.10w/ 3yr half warrant@\$0.15
- June2024 \$1.5M LIFE @\$0.06w/2yr half warrant@\$0.09



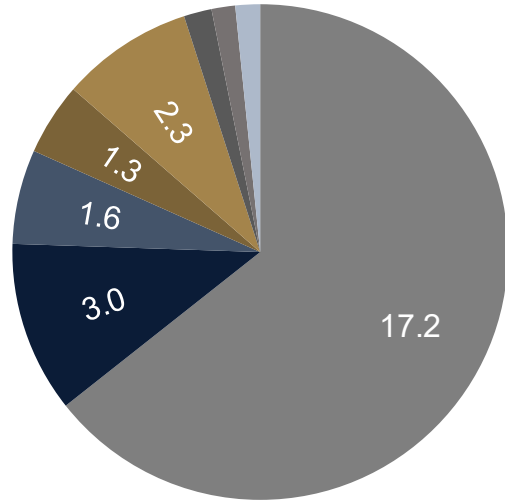
# PATHWAY TO SUCCESS



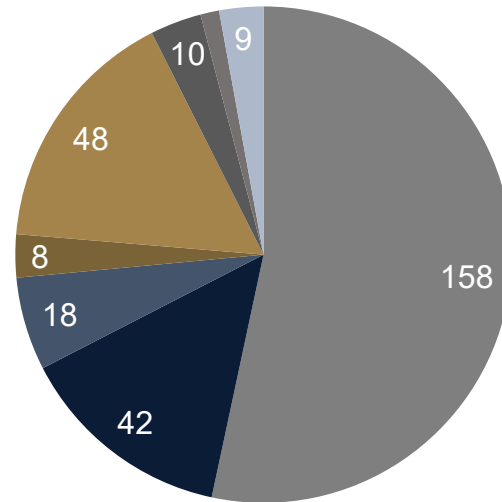


# SIGNIFICANT RESOURCE GROWTH (1,2)

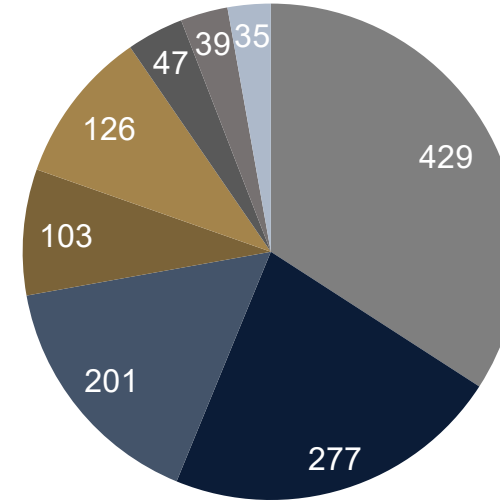
**Tonnage – 26.7 Mt**



**Contained Copper – 297 M lbs**



**Contained Cu Eq – 1,257 M lbs**



Lundberg
  Lemarchant  
 Boomerang
  Daniels  
 Bobby's Pond
  Long Lake  
 Domino
  Tulks Hill

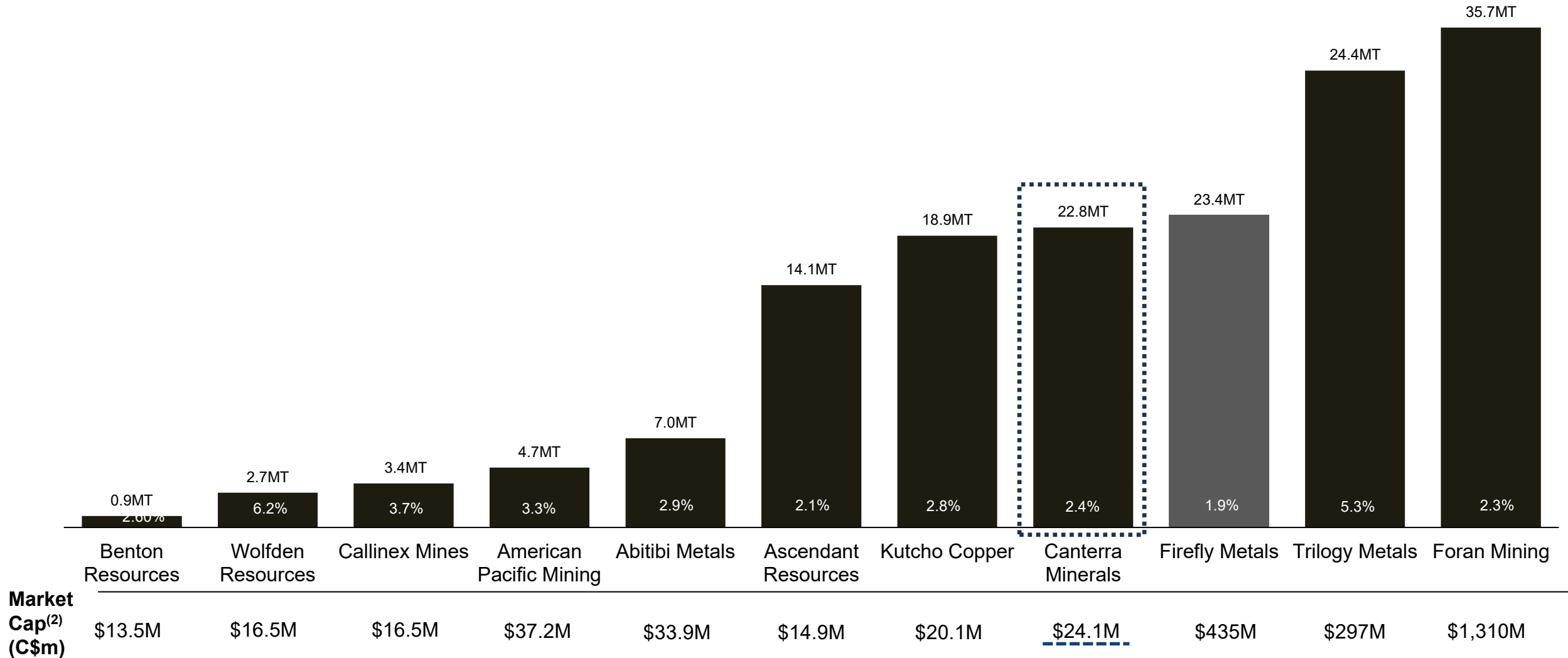
Project	Indicated Grades		Gross Value <sup>(2)</sup>
	Cu %	Cu Eq %	\$/t
Lundberg <sup>(1)</sup>	0.4%	1.1%	\$106.9
Lemarchant <sup>(1)</sup>	0.7%	4.4%	\$422.0
Boomerang <sup>(1)</sup>	0.5%	5.7%	\$538.8
Daniels <sup>(1)</sup>	0.3%	3.8%	\$364.9
Bobby's Pond <sup>(1)</sup>	0.9%	2.7%	\$253.0
Long Lake <sup>(1)</sup>	1.0%	4.5%	\$432.9
Domino <sup>(1)</sup>	0.4%	4.3%	\$407.3
Tulks Hill <sup>(1)</sup>	0.9%	3.7%	\$354.2
<b>Total Indicated</b>	<b>0.5%</b>	<b>2.0%</b>	<b>\$191.9</b>

1) See Resource Disclosures

2) Displayed tonnage is global resource: measured, indicated and inferred resource combined

# COMPARABLE VMS EXPLORERS AND DEVELOPERS

Contained Tonnage (M&I – million tonnes) and Copper Equivalent Grade (%) <sup>(1)</sup>

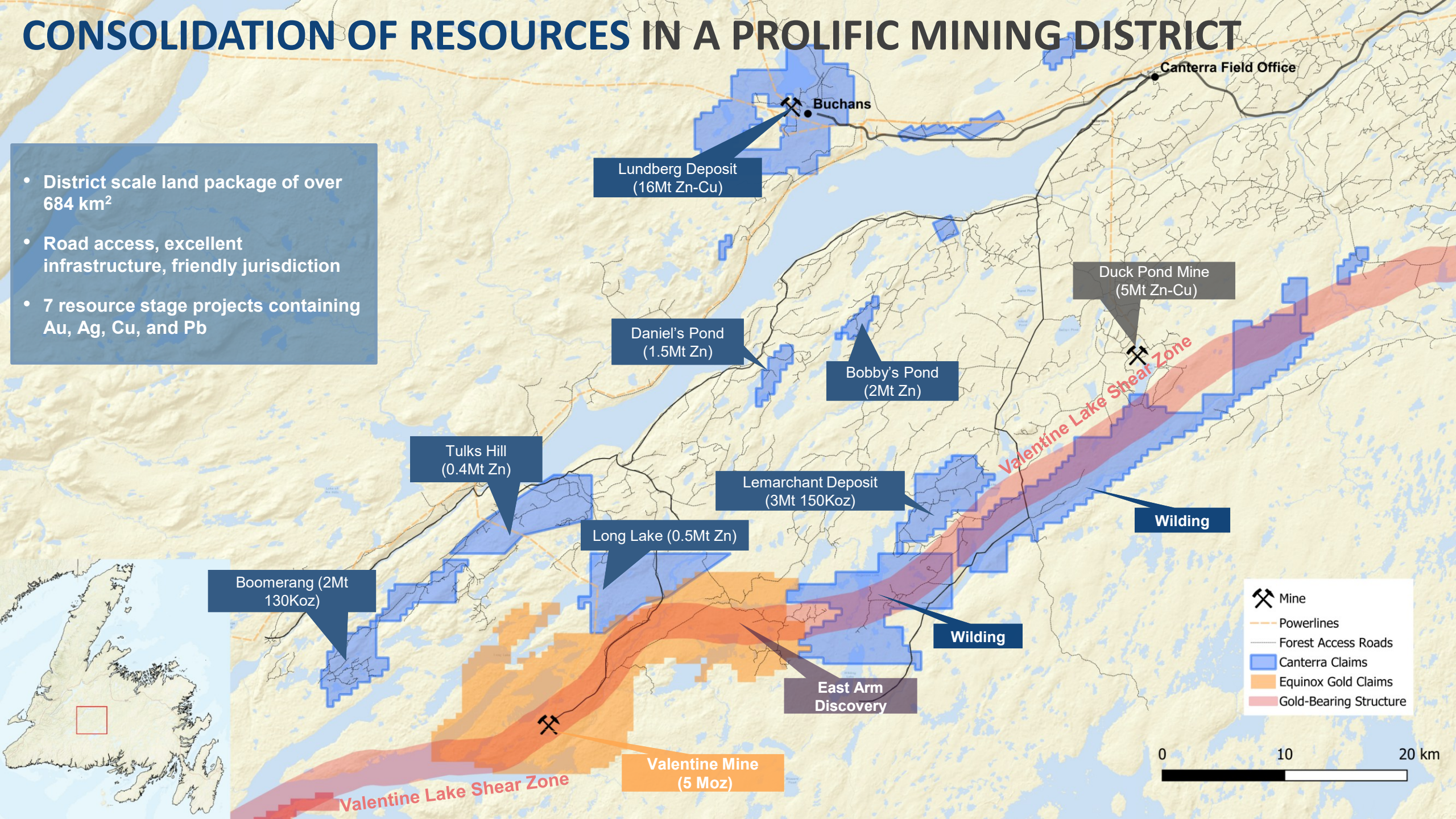


1) See Resource Disclosures, Metal prices used as of January 10, 2025 - 2) Market cap pulled from Stockwatch as of April 22, 2025

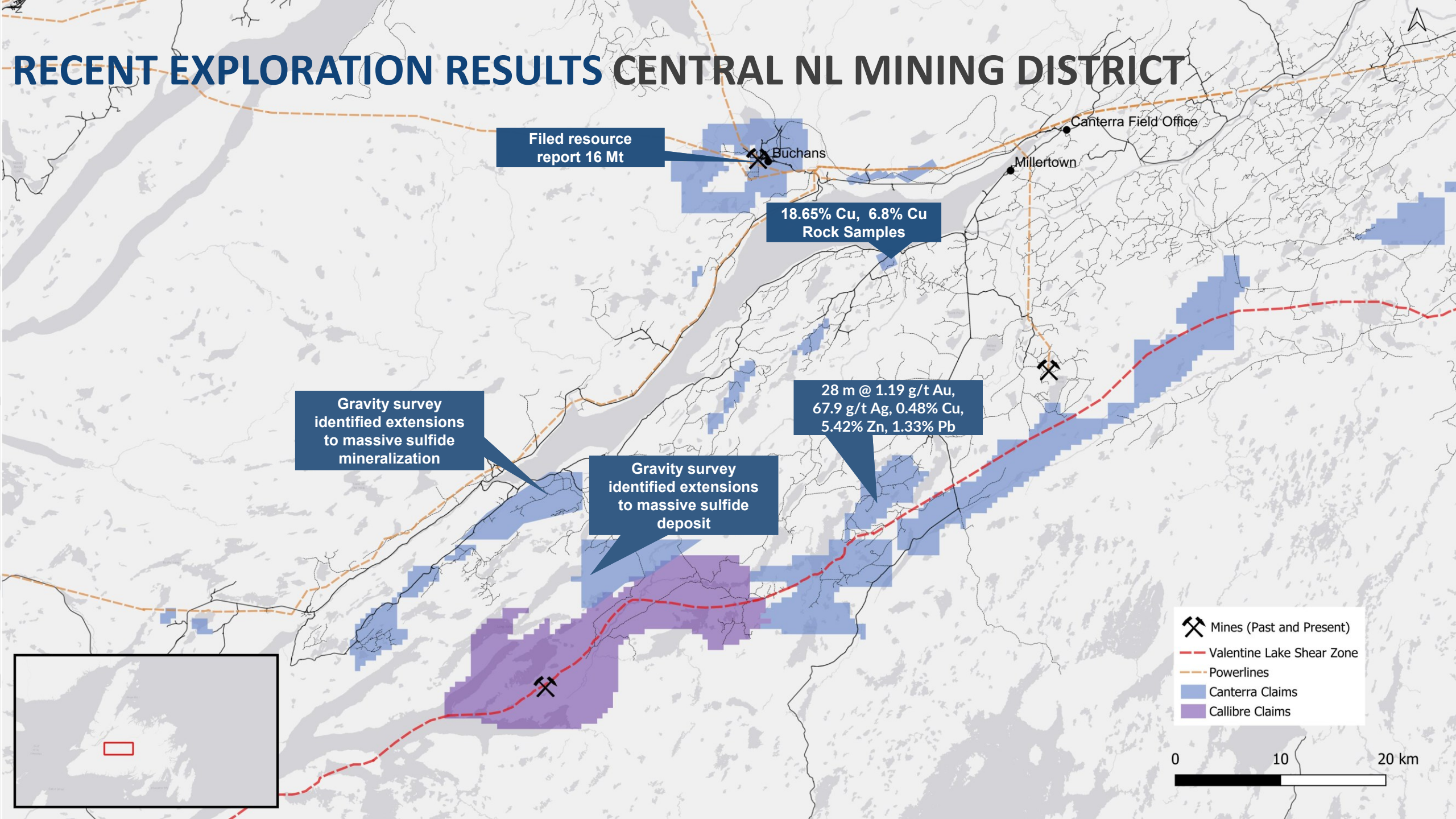


# CONSOLIDATION OF RESOURCES IN A PROLIFIC MINING DISTRICT

- District scale land package of over 684 km<sup>2</sup>
- Road access, excellent infrastructure, friendly jurisdiction
- 7 resource stage projects containing Au, Ag, Cu, and Pb







# RECENT EXPLORATION RESULTS CENTRAL NL MINING DISTRICT

Filed resource  
report 16 Mt

18.65% Cu, 6.8% Cu  
Rock Samples

Gravity survey  
identified extensions  
to massive sulfide  
mineralization

Gravity survey  
identified extensions  
to massive sulfide  
deposit

28 m @ 1.19 g/t Au,  
67.9 g/t Ag, 0.48% Cu,  
5.42% Zn, 1.33% Pb

- Mines (Past and Present)
- Valentine Lake Shear Zone
- Powerlines
- Canterra Claims
- Callibre Claims

0 10 20 km

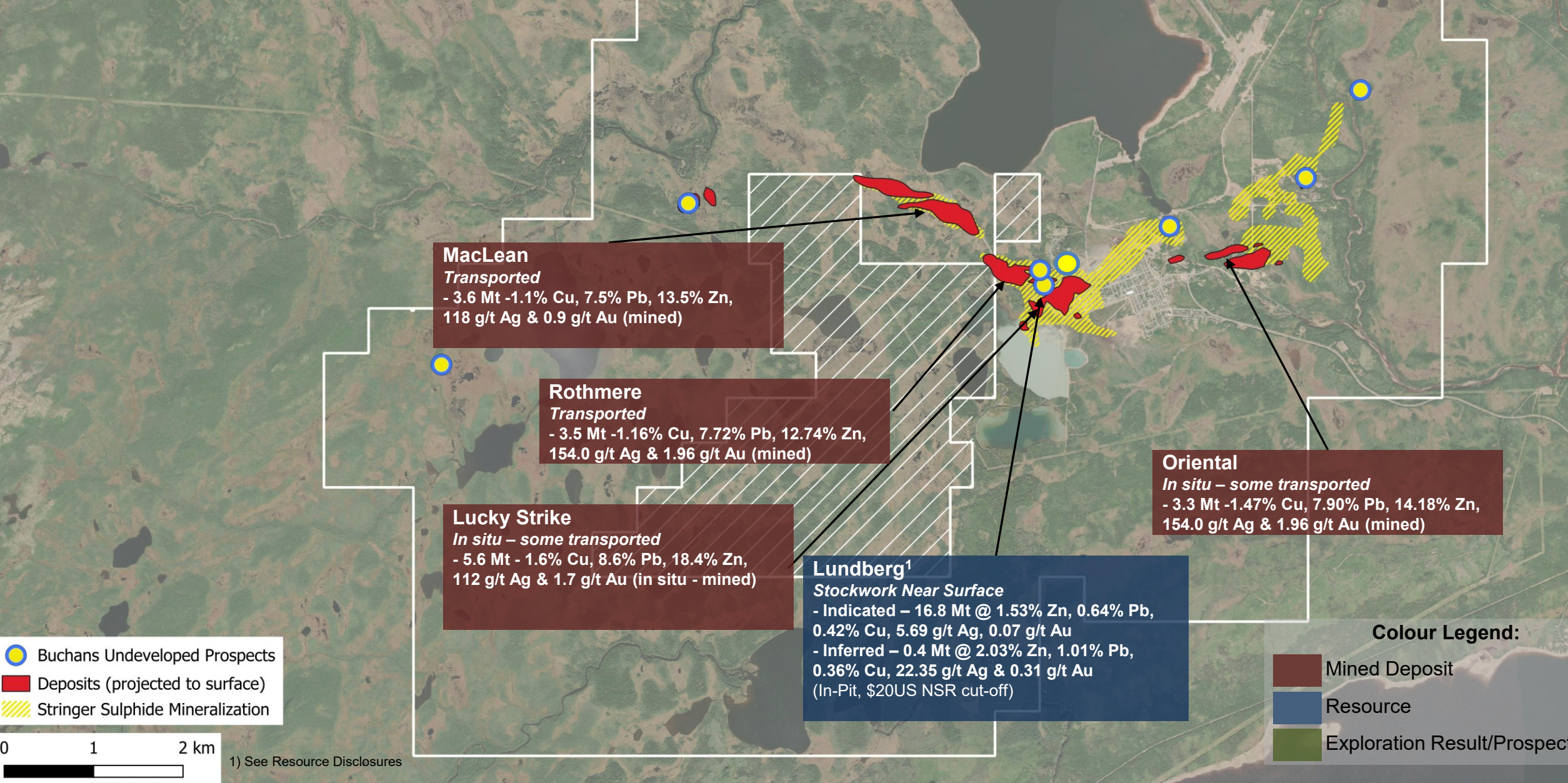




# BUCHANS

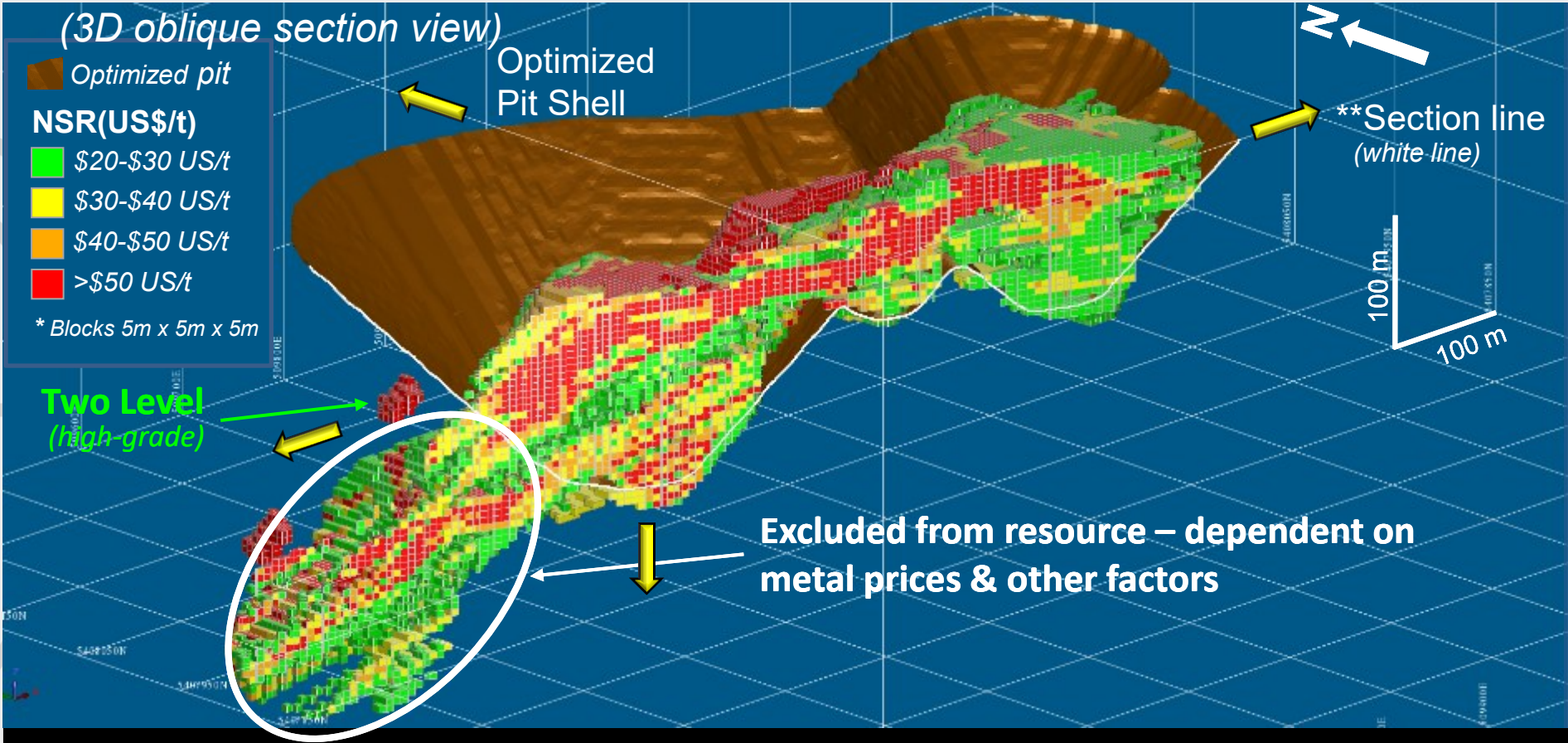


# Buchans Project – Undeveloped and Historical Deposits





# Lundberg Resource



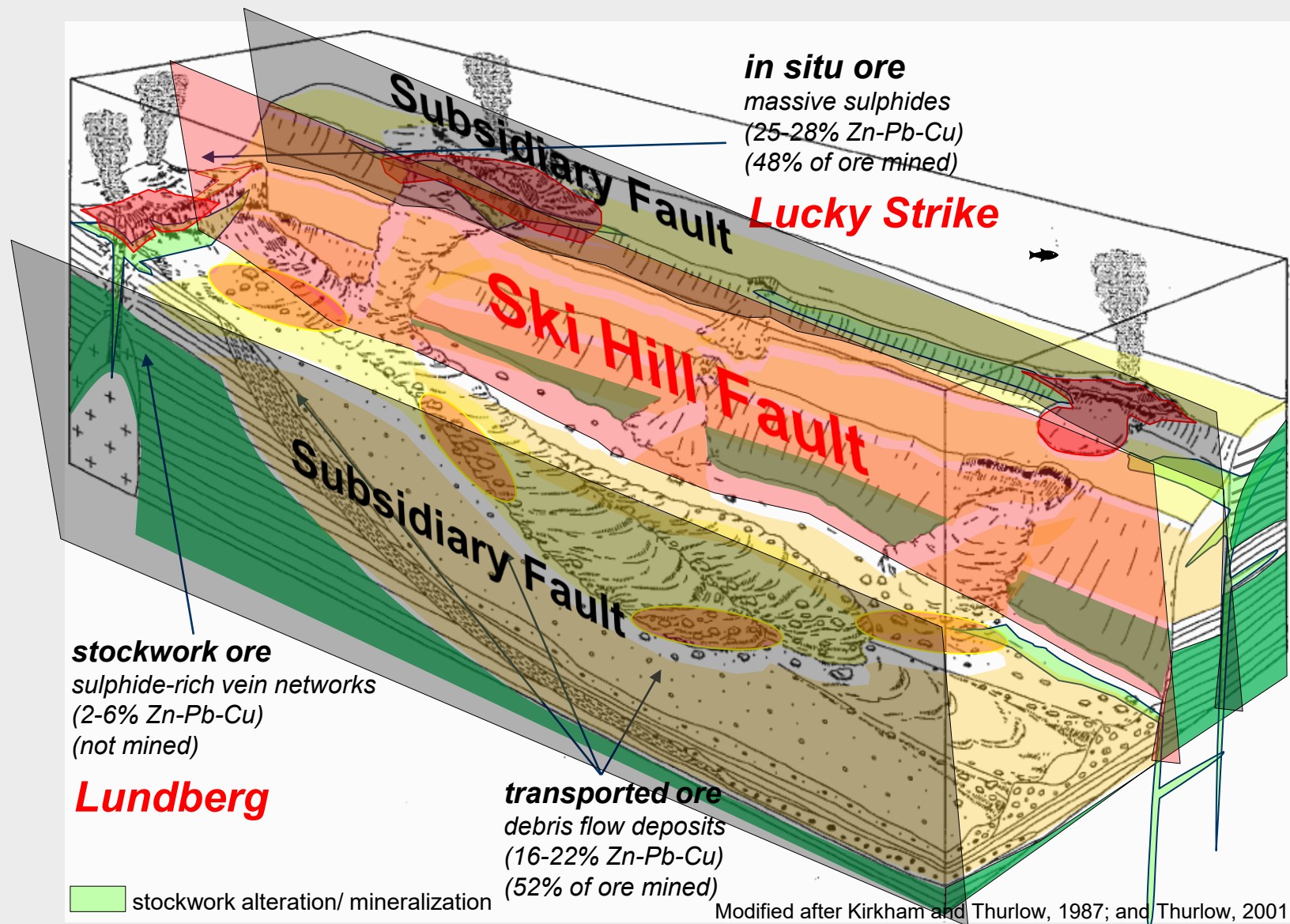
## Highlights

- Substantial Metal Inventory
- Near-surface potential open pit development
- Opportunities to expand resource include metal pricing & adjacent high-grade mineralization
- Based on 2019 metal prices \$1.20 US/lb Zn, \$1.00 US/lb Pb, \$3.00 US/lb Cu, \$1250 US/oz Au, and \$17 US/oz Ag.
- Two Level high grade zone open in multiple directions, intercepts include
  - 1.0m @ 14.83% Combined Base Metals (%Cu+%Pb+%Zn), 8.70% Zn, 4.87% Pb, 1.26% Cu, 133.2 g/t Ag and 0.47 g/t Au

Deposit	Cut Off Grade	Category	Tonnes <i>M</i>	Cu %	Zn %	Pb %	Au <i>g/t</i>	Ag <i>g/t</i>	Cu Eq. <sup>(1)</sup> %	Zn Eq. <sup>(1)</sup> %	Copper <i>M lbs</i>	Contained Metal		
												Zinc <i>M lbs</i>	Cu Eq. <sup>(1)</sup> <i>M lbs</i>	Zn Eq. <sup>(1)</sup> <i>M lbs</i>
Lundberg <sup>(1)</sup>	20 USD / t	Indicated	16.8	0.4%	1.5%	0.6%	0.1	5.7	1.1%	3.8%	155.5	566.3	415.2	1,422.4
		Inferred	0.4	0.4%	2.0%	1.0%	0.3	22.4	1.6%	5.6%	3.0	17.0	13.8	47.2
Total		17.2	0.4%	1.5%	0.6%	0.1	6.1	1.1%	3.9%	158.5	583.3	429.0	1,469.6	
Gross Value % <sup>(1)</sup>			37%	40%	13%	5%	5%							

1) See Resource Disclosures

# Buchans Project – Geological Model



## Target Mineralization

1. In situ mineralization - massive sulphides
2. Transported mineralization - collapse of in situ source and is an indication of nearby in situ source (*adjacent ~400 m away*)
3. 52% of Buchans Mine was transported mineralization, transported deposits are also valid high-grade targets (Two level discovery)
4. Feeder Mineralization - sulphide-rich vein networks beneath in situ source



# Buchans Exploration

- High Potential Exploration Areas to find In-Situ Source and Transported ores displaced along McLean-Lucky Strike Trend
- Minimal to no drilling at depth and outside of mined ore zones

**Two Level (High Grade-Transported Ore)**  
1.0 m@ 14.83% CBM - 1.26% Cu, 4.87% Pb, 8.70% Zn,  
133.2 g/t Ag & 0.47 g/t Au

3m @ 27% CBM\*

Poorly Tested  
Below 250 m

47m @1.6%Cu ,10.5%Pb, 20.9%Zn,  
110g/t Ag, 1.6g/t Au (historic)

117m @ 0.3%Cu, 2.06%Pb,  
5.0g/t Ag, 0.03 g/t Au

12.7 Million Tonnes

High Grade Ore

- Surface Collar
  - Underground Collar
  - Exploration Target Areas
  - Lundberg Resource Projection
- Deposits (projected to surface)
- In-Situ
  - Transported





# Buchans Project – Exploration

**Clementine (transported)**  
*Historic (unclassified non-43-101 compliant)*  
- 0.36 Mt @ 4.9% Zn, 2.6% Pb, 0.3% Cu & 41.0 g/t Ag




**Two Level Intersections**  
-1.8 m @ 9.48% CBM - 0.76% Cu, 3.15% Pb, 5.57% Zn, 90.5 g/t Ag & 0.37 g/t Au incl. --1.0 m @ 14.83% CBM - 1.26% Cu, 4.87% Pb, 8.70% Zn, 133.2 g/t Ag & 0.47 g/t Au

**Buchans North (in situ) Intersections**  
- 0.3m @15.50% Cu, 1.85% Pb, 5.80% Zn, 214.8 g/t Ag & 2.92 g/t Au  
- 2.1m 15.52% Zn, 7.61% Pb, 0.92% Cu, 148.9 g/t Ag & 1.15 g/t Au

**Middle Branch Historical Intercept**  
- 1.8 m - 0.4% Cu, 3.1% Pb, 4.8% Zn, 48 g/t Ag & 0.7 g/t Au

**Sandfill (transported) Historic (unclassified non-43-101 compliant)**  
- 75,000 tons @ 10.0% Zn, 4.7% Pb, 1.5% Cu, 85.7 g/t Ag & 0.34 g/t Au

**Clementine West Stockwork**  
- Intersections to 118m

-  Buchans Undeveloped Prospects
-  Deposits (projected to surface)
-  Stringer Sulphide Mineralization

**Colour Legend:**

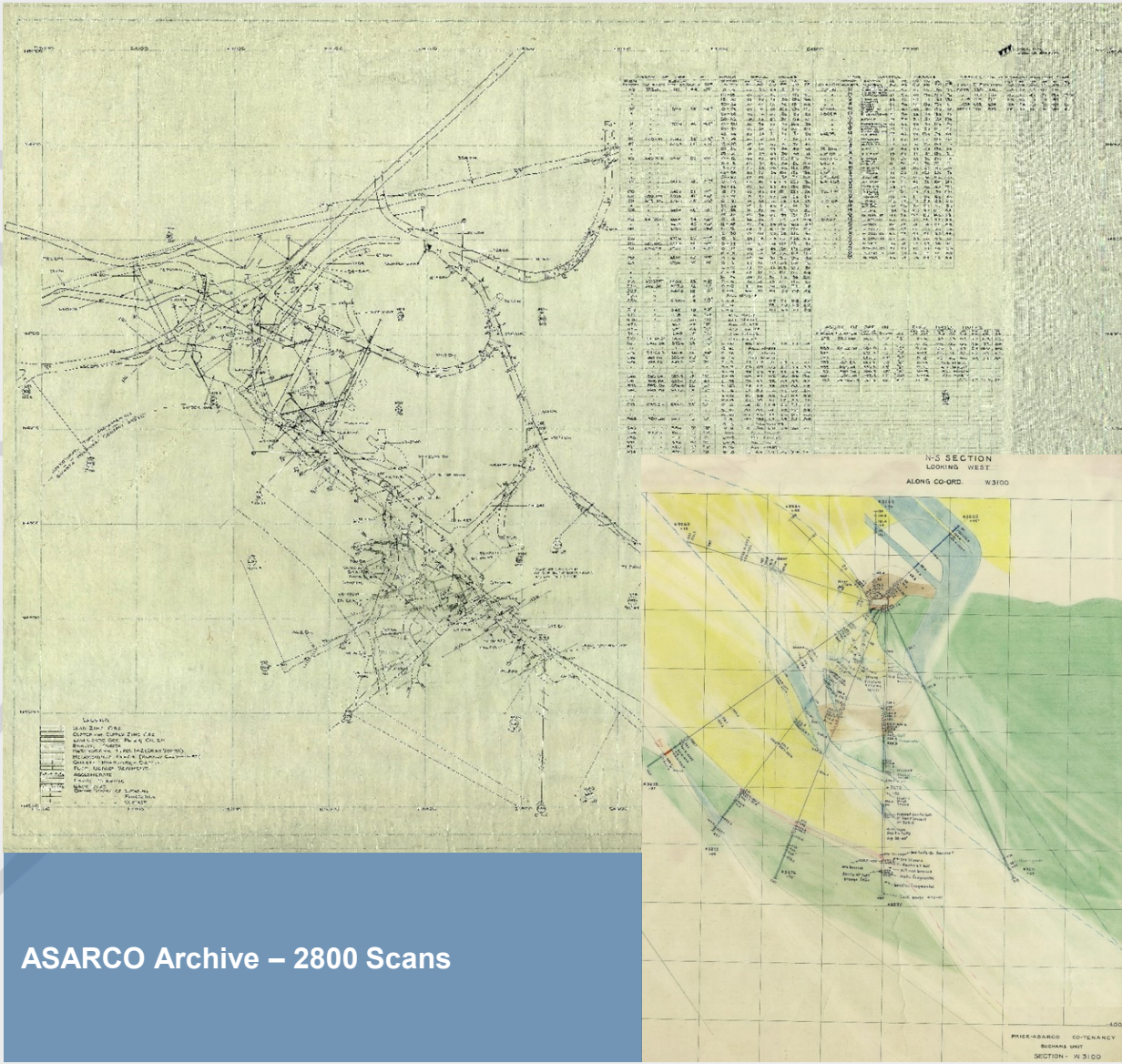
-  Mined Deposit
-  Resource
-  Exploration Result/Prospect



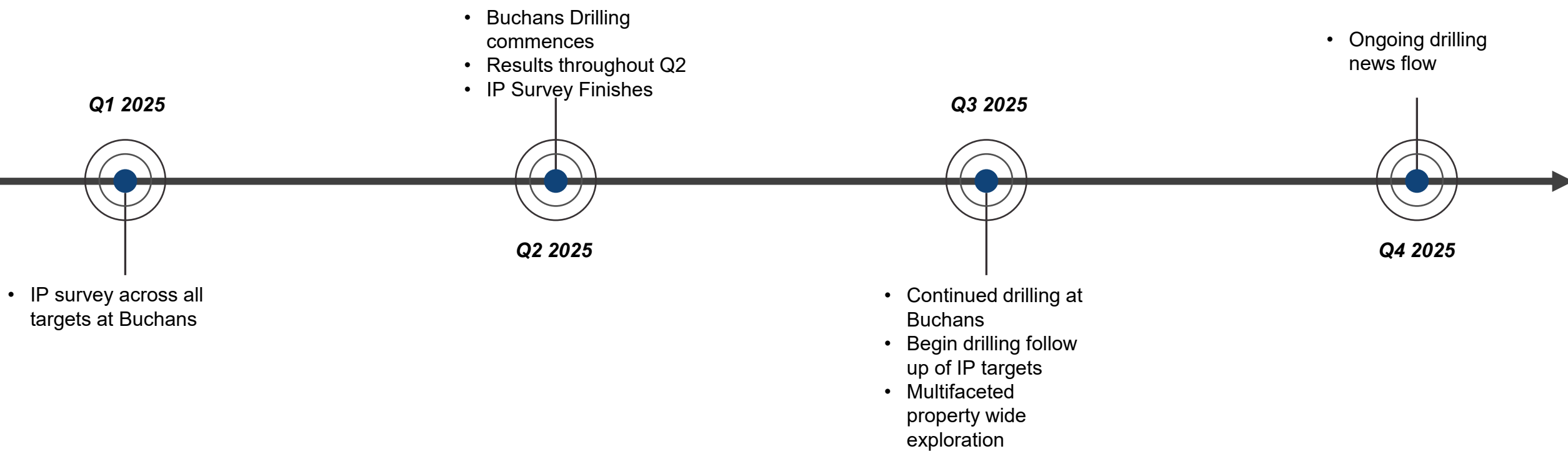
1) See Resource Disclosures



# Big Data Mining – Exploring for New High-Grade Deposits



# TIMELINES & CATALYSTS





# GLOBAL RESOURCES

Deposit	Category	Tonnes M	Cu %	Zn %	Pb %	Au g/t	Ag g/t	Zn Eq. <sup>(1)</sup> %	Cu Eq. <sup>(1)</sup> %	Copper M lbs	Zinc M lbs	Contained Metal		Zn Eq. <sup>(1)</sup> M lbs	Rock Value USD\$/t
												Precious Metals <sup>(2)</sup> Au Eq. oz <sup>(1)</sup>	Cu Eq. <sup>(1)</sup> M Lbs		
Lemarchant <sup>(1)</sup>	Indicated	2.4	0.7%	6.2%	1.6%	1.2	64.1	15.2%	4.4%	36.3	328.1	158,169	236.2	809.2	422.0
	Inferred	0.6	0.5%	4.7%	1.1%	1.1	44.7	11.4%	3.3%	5.6	57.8	29,290	41.2	141.0	317.7
Boomerang <sup>(1)</sup>	Indicated	1.4	0.5%	7.1%	3.0%	1.7	110.4	19.4%	5.7%	15.3	213.3	134,309	170.0	582.5	538.8
	Inferred	0.3	0.4%	6.7%	2.9%	1.3	96.5	17.2%	5.0%	2.7	41.2	22,486	30.8	105.4	478.4
Domino <sup>(2)</sup>	Inferred	0.4	0.4%	6.3%	2.8%	0.6	94.0	14.6%	4.3%	3.6	57.1	23,702	38.7	132.7	407.3
Long Lake <sup>(3)</sup>	Indicated	0.4	1.0%	7.8%	1.6%	0.6	49.0	15.6%	4.5%	8.7	70.2	15,595	40.7	139.6	432.9
	Inferred	0.1	0.7%	5.8%	1.2%	0.5	34.0	11.6%	3.4%	1.2	9.9	2,286	5.8	19.9	321.9
Lundberg	Indicated	16.8	0.4%	1.5%	0.6%	0.1	5.7	3.8%	1.1%	155.5	566.3	76,763	415.2	1,422.4	106.9
	Inferred	0.4	0.4%	2.0%	1.0%	0.3	22.4	5.6%	1.6%	3.0	17.0	7,252	13.8	47.2	156.8
Bobby's Pond	Indicated	1.1	0.9%	4.6%	0.4%	0.2	16.6	9.1%	2.7%	21.8	111.6	14,523	64.4	220.5	253.0
	Inferred	1.2	1.0%	3.8%	0.3%	0.1	11.0	8.0%	2.3%	26.5	100.5	7,700	61.7	211.4	222.4
Tulks Hill	Indicated	0.4	0.9%	4.0%	1.6%	1.2	35.1	12.7%	3.7%	8.5	37.9	22,747	35.2	120.7	354.2
Daniels	Indicated	0.9	0.3%	5.1%	2.5%	0.6	101.4	13.1%	3.8%	6.2	104.6	56,413	78.5	268.9	364.9
	Inferred	0.3	0.3%	4.6%	2.1%	0.5	85.9	11.6%	3.4%	2.2	33.5	17,188	24.6	84.3	322.5
Total	Indicated	23.4	0.5%	2.8%	1.0%	0.3	23.4	6.9%	2.0%	252.3	1,432.0	478,520	1,040.3	3,563.6	191.9
	Inferred	3.2	0.6%	4.4%	1.3%	0.5	44.2	10.4%	3.0%	44.7	317.0	109,905	216.6	741.9	289.3
Global		26.7	0.5%	3.0%	1.0%	0.4	25.9	7.3%	2.1%	297.0	1,749.0	588,425	1,256.9	4,305.5	203.7

1) See Resource Disclosures

2) Precious Metals only

# CENTRAL NEWFOUNDLAND VMS BELT VS AUSTRALIA'S PROLIFIC TASMANIAN VMS BELT

Geological Belt (Location)	Central Newfoundland Volcanics (Newfoundland)	Mount Read Volcanics (Tasmania)
Deposit Type	Polymetallic (Cu, Zn, Pb, Ag, Au) Volcanogenic Massive Sulphide Lenses	Polymetallic (Cu, Zn, Pb, Ag, Au) Volcanogenic Massive Sulphide Lenses
Exploration Timeline	1897-2025 Intermittent	1893-2025 Extensive and continuous
Number of Mines Developed	2	5
Total Production	21.7 M tonnes	60.9 M tonnes <sup>1</sup>
Metal Values (averaged)	12.5% Zn, 5.9% Pb, <b>1.83% Cu</b> , 110g/t Ag and 1.24 g/t Au	12.9% Zn, 5.5% Pb, 0.53% Cu, <b>157 g/t Ag and 2.47 g/t Au<sup>1</sup></b>
Metal Focus	Uniquely <b>high copper</b> content with strong precious metal credits	Strong precious metal focus
Development and targets	Strong exploration potential with modern techniques and many untested geophysical anomalies	Limited new discovery potential with few remaining untested targets

1. Production and figures based on reported numbers from Rosebery, Hellyer, Hercules, Que River and Mount Lyell mines



# TECHNICAL ADVISORS



**Phil Smerchanski, M.Sc, P.Geo**  
**Lead Technical Advisor**

- Over 23 years of experience in magmatic nickel sulphide and orogenic gold exploration
- Former VP of Exploration and Tech. Services at Pure Gold Mining



**Matt Penny, P.Geo**  
**Geophysics**

- More than 20 years of worldwide exploration experience
- Glencore, AngloAmerican and Lundin Mining



**Stephen Piercy, PhD, PGeo**  
**VMS**

- Head of the Piercy research group at the Department of Earth Sciences at Memorial University
- Specializes in VMS deposits in central Newfoundland



**Rodney Allen, PhD**  
**VMS**

- 42 years experience in mineral exploration and research applied to mineral exploration.
- Former Principal consultant to Boliden Group



**Randy Turner, P.Geo**  
**Former Chairman**

- Over 50 years of experience.
- President of Trimin Resources Ltd development and sale of the McIlvenna Bay copper/zinc deposit in Saskatchewan.
- Winspear Diamonds Inc. from the discovery of the Snap Lake diamond deposit in northern Canada through to its sale to De Beers Mining for \$305 million. In 2011, as President of Silver Quest Resources Ltd., Mr. Turner was involved in the acquisition by New Gold Inc. of the Capoose and Blackwater Projects for \$180 million.
- Hugo Dummett award in 2007, for his contributions to diamond exploration.